

# *ASTA/NJ Chamber Music Institute at Kean University*



## *Frequently Asked Questions*

### **TELL ME ABOUT STUDENT ENSEMBLE ASSIGNMENTS**

Students are assigned to an ensemble and coach for the duration of the festival by a faculty committee headed by Peg Roberts. Ensemble assignments are made prior to the start of the CMI based upon information culled from the Teacher Recommendation and Musical Experience forms. *Please address any questions you have regarding student ensembles to Peg Roberts (pegzr@optonline.net; (973) 610-8135).*

### **HOW DO WE SET UP PRIVATE LESSONS WITH A FACULTY MEMBER DURING THE CMI? HOW ARE TEACHER'S PAID?**

If you are interested in private lessons with a particular teacher, we ask that you pay the teacher directly at registration (2 pm Sunday, Kean Hall at Kean University). Scheduling of the lessons will be done by the private teacher following registration.

### **TELL ME MORE ABOUT STUDENT DORMITORY ASSIGNMENTS**

Students will be assigned by age and gender to a dormitory room by a faculty committee headed by Peg Roberts. We will do our best to honor requests for specific roommate assignments. *Please contact Ms Roberts (pegzr@optonline.net; (973) 625-9552) directly for more information or if you have a particular housing concern.*

### **WHAT ARE THE DORM ROOMS LIKE?**

Students will be housed in one of the university's brand **new Freshman Dormitory**. These halls are opening for the first time this summer and promise to be truly spectacular – certainly a great improvement over past years' accommodations.

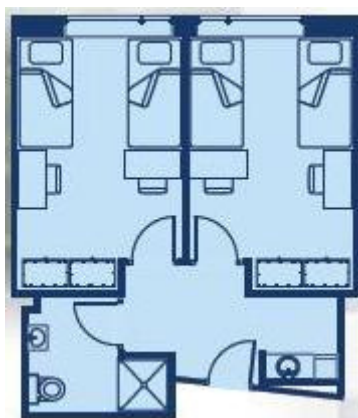
- New Freshman Residence Hall: Each bedroom contains two beds, two closets, two desks, two desk chairs, and **one small refrigerator (microfridge: small refrigerator combined with microwave)**. **BEWARE CMI-ERS FROM YEARS PAST – dorm fridges are much smaller than in previous years.** Here is an illustration of the dorm room layout.

Room 16'6" x 11'  
Bathroom 7'4" x 6'

# *ASTA/NJ Chamber Music Institute at Kean University*



## *Frequently Asked Questions*



### **ARE THE DORM ROOMS AIR CONDITIONED?**

Yes. Each suite has its own climate control.

### **WHAT SHOULD I BRING WITH ME TO THE DORMS?**

A checklist of items for dorms will be sent to you via email.

- Bring your own sheets, blankets, pillows, towels, soap, shampoo and other personal items
- Small lamps for reading
- Folding music stand
- Bring your own utensils for the kitchen area.
- Kean University provides shower curtains, toilet paper and light bulbs
- Snacking is fine, but please **CLEAN UP!** We would suggest that you clearly label any food items or utensils you bring to avoid confusion and accidental use by a roommate. Any major mishaps will be paid for by all the students in the apartment, unless one student comes forward to claim responsibility.
- Rain gear (rain coats, umbrellas)
- No alcohol or smoking on campus.
- **Do NOT bring** hot plates, toasters, coffee makers, or candles.

### **HOW DO I GET TO THE DORMS? WHERE DO I PARK TO ACCESS WILKINS THEATRE BUILDING FOR REGISTRATION?**

# *ASTA/NJ Chamber Music Institute at Kean University*



## *Frequently Asked Questions*

On your map, locate the parking lot directly in front of the Wilkins Theatre building. Use that lot for registration. A short distance away is the Vaughn Eames parking lot adjacent to the Vaughn Eames Building (VE); park there for accessing walkways leading to the Freshman Dorm for dormitory check in and move in.. Dormitories can be reached by walking a short distance along a paved pathway. Resident Assistants will be on hand to direct students and their families to the correct dormitory. For a complete map go to <http://www.kean.edu/campusmap.html> and/or see enclosed campus map. Further instruction on accessing the dormitory by car will be provided at registration.

### **ARE THE DORMS SECURE?**

There is a full-time security guard at the entrance to all residence halls. The guard allows no one in without proper identification. Students will be well-supervised during all ASTA CMI activities. The Campus Security Building (Campus police station) is nearby the dorm. The students will be provided with IDs so that they will be able to gain access into the building. The students must show this ID to the security guard every time they enter the building.

### **ARE THERE RA's ON THE DORM FLOOR WITH THE ASTA CMI PARTICIPANTS?**

The University provides one Resident Assistant per floor and ASTA CMI has hired three counselors (both adult: one male, one female) to stay in the dorms with the students in their own apartment. ASTA CMI will also have a number of faculty members who will stay overnight in the dorms on the same floor as the students.

### **ARE THERE PHONES IN THE DORM ROOMS?**

There are no phones in the dorm rooms, but students may bring their own phones to plug in. The dorm phone systems are already working and once a phone is plugged in the residents will be able to access any extension on campus and also receive calls from off campus. Residents would have to utilize Kean University's long distance carrier in order to call off campus. Important campus extensions will be provided to all students at registration. For more information: [http://www.kean.edu/~reslife/pros\\_services.html](http://www.kean.edu/~reslife/pros_services.html)

### **ARE THERE TVs IN DORM ROOMS? WHAT ABOUT COMPUTERS AND OTHER ENTERTAINMENT DEVICES?**

# *ASTA/NJ Chamber Music Institute at Kean University*



## *Frequently Asked Questions*

No. Residents are responsible for bringing televisions or any other source of entertainment (video games, DVD players, stereos). There is a television in the dormitory community center along with vending machines. We discourage bringing computers and other entertainment devices. ASTA CMI is a relatively short event with a lot going on. Outdoor recreational facilities are adjacent to the dorm, and are reserved for ASTA students on Tuesday and Wednesday. The University Center contains rooms with billiard tables, table tennis and a video arcade.

For more information: [http://www.kean.edu/~reslife/pros\\_services.html](http://www.kean.edu/~reslife/pros_services.html)

### **WHERE CAN I LEARN MORE ABOUT THE DORMITORIES AT KEAN UNIVERSITY?**

Please visit the following website for more information:

<http://www.kean.edu/~reslife/>.

### **ARE STUDENTS SUPERVISED DURING THEIR FREE TIME PERIODS?**

Students will be asked to tell faculty where they will be spending their free time to help us keep track of their whereabouts. All students are required to stay on campus for the duration of the ASTA CMI. Faculty members are available at all times; students will be informed during registration of how they may contact faculty when they need to do so.

### **ARE CELL PHONES ALLOWED TO BE USED DURING ASTA CMI?**

We recommend that students bring a cell phone to the ASTA CMI. We will keep a register of student cell phone numbers that we will use in the event of an emergency. Cell phones must be kept off during rehearsals and concerts.

### **DO STUDENTS HAVE ACCESS TO THE CAMPUS GYMNASIUM AND RECREATIONAL FACILITIES DURING THEIR STAY ON CAMPUS DURING ASTA CMI?**

ASTA CMI participants will be able to use the campus gymnasium & recreational facilities. University supplied ID is required for access.

# *ASTA/NJ Chamber Music Institute at Kean University*



## *Frequently Asked Questions*

Tennis courts and basketball courts are available on a first-come, first served basis.

### **HOW CAN WE REACH ASTA CMI FACULTY DURING THE CMI SESSIONS?**

The easiest way to reach us during the week will be to call us on our cell phones, or leave an email that we can read in the evening.

- Christopher Kenniff director 908-656-1548 cmkgtr@yahoo.com
- Peg Roberts assistant director (973) 610-8135

### **WHAT MUSIC SHOULD I BRING? DO I NEED A MUSIC STAND? DO I NEED TO PURCHASE CHAMBER MUSIC FOR ASTA CMI?**

- We ask that you bring any music that you wish to study in private lessons, practice during personal practice time or that you may wish to read with other CMI participants.
- **Please bring a collapsible music stand to all rehearsals and for private practice. Bring pencils to rehearsals as well!**
- We will provide you with the music you will study /perform at ASTA CMI. Music will be handed out at the first ensemble coaching session.

### **WHAT IS APPROPRIATE CONCERT ATTIRE?**

- Concert Attire should be modest, conservative, and casual, combining black and white with skirts well below the knee for girls.
- Attire for special events and performances (Sunday evening concert, student performances that you will attend but not perform in & faculty mini-recitals) is casual. You should plan on more formal attire for the Daedalus Quartet and Kean Concert Artist Ensemble concerts.

### **WHAT ARE CAFETERIA HOURS OF OPERATION? IS THERE A CONVENIENCE STORE ON CAMPUS? HOW ABOUT AN ATM?**

# *ASTA/NJ Chamber Music Institute at Kean University*



## *Frequently Asked Questions*

- There is an ATM machine in the University Center (open 7 a.m. to 7 p.m.).
- Cafeteria hours of operation are 7 a.m. to 7 p.m.
- The cafeteria does not accept checks or credit cards.
- There is a convenience store located in the University Center; vending machines are located in the dorms, University Center and Vaughn Eames.

### **HOW DOES THE MEAL PLAN WORK?**

- Visit Gourmet Dining Services' website if you wish:  
<http://www.gourmetdiningllc.com/campus/kean/index.php>
  - All meals will be served in the newly renovated University Center Cafeteria.
  - GDS provides meal vouchers for student use.
  - Your meals on campus are all paid for by your tuition. Students may wish to carry some cash but meals are paid for with meal vouchers at the cafeteria in University Center.
- The evening meal on Sunday and on Friday, the Pizza Party on Monday night and the Ice Cream Social on Wednesday night are free to the students. Breakfast on Saturday morning is also free to the students. These meals are not held in the cafeteria. Please see Daily Schedule for location.